



Year 9 and New Student Information

creative · inspiring · diverse

What does ERO say about LPHS?

Logan Park High School was selected as one of 12 top performing schools in New Zealand and showcased in a recent ERO* publication, 'What Drives Learning in the Senior Secondary School?'

*ERO = NZ Education Review Office

Here is what impressed ERO:

"The school's approach to curriculum delivery is student centered, inclusive and flexible. It takes account of the diversity and richness of the school's community."

"Shared language and student agency are at the core of the school. Students, teachers and the community have discussed what is special about the school and have identified the values that drive the curriculum."

"Students said they want to be at school as social beings, to discuss, argue and develop their ideas and knowledge. The main aim in class was to teach students to think critically about what they learnt."

"Reports on student dispositions and learning habits are sent home weekly and students are awarded a Junior Diploma that indicates their progress in key competencies."

"The school has achieved results in New Zealand Scholarship significantly above those of any other school in the region."

These accolades build on the comments in Logan Park's latest ERO report:

"Successful student achievement has been sustained over time. There are ongoing high expectations for student learning and engagement."

"A strong culture of inclusiveness and diversity has been maintained over many years. This contributes to positive relationships and high levels of student engagement."

"Student wellbeing is prioritised and suitable support is accessed by the school to ensure students' needs are met."

"The school has many effective processes that enable achievement of equity and excellence."

"Leaders are strongly focused on providing extensive opportunities for all students to reach their potential."

"There is a culture of high expectation for teaching and learning across the school."

"There is a collective focus on continuous improvement through reflective practices."



Curriculum

Year 9 students at Logan Park High School study the 8 Curriculum Learning Areas of: **English, Mathematics, Science, Social Studies, Health and Physical Education, Arts, Languages and Technology.**

Subject Choices: With the exception of Languages, Year 9 subject choices run for half the year. Students choose **three** subject choices for **each** half-year.

Students who choose two languages can select two additional subjects from Arts and Technology (one for each half-year). Students who choose one language select four additional subjects from Arts and Technology. Students who do not study any language, other than English, select six subject choices for the year from Arts and Technology.

To help students make an informed choice about their curriculum subject choices, this booklet gives information about each of the subjects offered in Year 9 at Logan Park High School. House Deans will then discuss and review subject choices made at the Year 9 enrolment interviews. They will be able to answer any questions you may have.

Compulsory Core Subjects	The Arts (half year)	Languages (full year)	Technology (half year)
English	Art	French	Food Technology
Health and Physical Education	Dance	German	Design & Visual Communication (DVC / Graphics)
Mathematics	Drama	Japanese	Digital Technology
Science	Music	Korean	Fabric Technology
Social Studies		Māori	Hard Materials Technology
			Product Design Technology

We will send an electronic form for **Subject Selection** after we confirm enrolments. We have an **Enrolment Scheme** - make sure you get your enrolment form in by the deadline.



COMPULSORY CORE SUBJECTS

English



English is a rich and varied course at Logan Park High School, which is about connecting with others, exploring ideas, building relationships, and nurturing our voice so we can tell our stories. In this, students have the opportunity to engage with and enjoy language in a wide range of contexts. The conceptual focus at Year 9 is The Self & The Story, which centres around an appreciation of story and myth, as well as our particular Aotearoa NZ/Pasifika literary heritage. Classes will study Aotearoa New Zealand literature, including Māori and Pacific texts, as well as the possibilities of dipping into the traditions of mythology, fairy-tale, storytelling, and Shakespeare.

The skills of thinking critically, reading, writing, speaking, listening, viewing and presenting are applied to everything from the classics to contemporary texts. Creativity is foundational, skills are developed, and support is offered to help everyone tell their stories, develop their voice, and find their place. The power of language and the power of self-expression is the basis from which everything else grows. Visit a Year 9 class at Logan Park High School and students may be writing and presenting podcasts, enacting scenes from Shakespeare, writing poems or exploring texts that get them thinking about themselves and the world. All Year 9 students experience our weekly Library programme, with a strong focus on extending their personal reading habits and choices as well as developing information literacy skills and digital citizenship values. Our peer tutoring programme sees senior students offering ongoing support to juniors in a relaxed but focused environment. Some of our extension opportunities include the LPHS writing anthology and competitions in creative prose, poetry and formal writing, support for students entering speech competitions, debating, spelling bees, writing workshops, and visiting speakers.

Health and Physical Education



In Health and Physical Education (HPE), students develop a wide range of skills in a variety of contexts (through both individual and team activities). Students are encouraged to fulfill their potential, and opportunities exist both within lessons and outside of class to foster individual talents in a variety of areas.

Our focus is on participation, improving coordination, movement skills, fitness, developing and improving communication, confidence, self esteem, assertiveness and leadership skills. We have access to the variety of facilities surrounding Logan Park.

Topics covered in Year 9 include:

Health — Personal identity, body image, decision making, assertiveness skills, sexuality education, nutrition and personal safety.

Physical Education — Athletics, sports education, climbing, and team sports. HPE provides an enjoyable, safe, supportive and positive learning environment that cares about individual and group success. We encourage students to be bold and have a go!

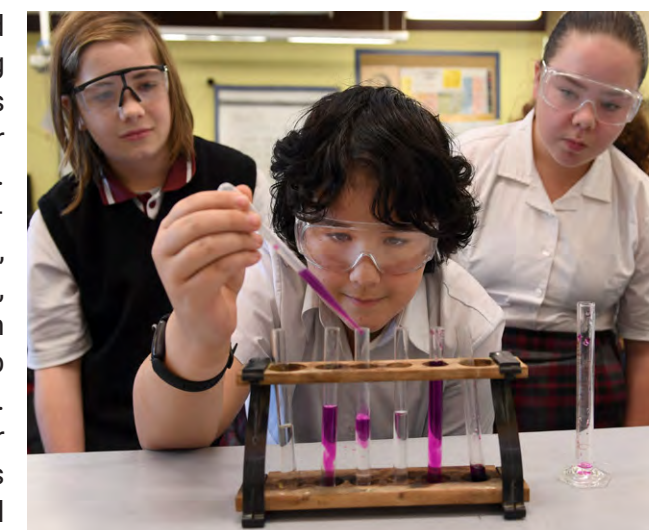
Mathematics



Mathematics is the exploration and use of patterns and relationships in quantities, space, time, and data. We aim to develop students' enjoyment and confidence in Maths, plus their ability to think logically and communicate mathematical ideas. Mathematics has a wide range of practical applications in everyday life, in other learning areas, and in workplaces. Many career choices and tertiary studies require it. Students will use a mixture of online resources and hands on manipulatives to support and strengthen approaches and problem solving techniques in order to prepare them for senior Mathematics programmes. Throughout the course of the year, students have the opportunity to enter a variety of Mathematics competitions. Students can opt into our Junior Mathematics Enrichment Group which is designed around a series of problems over a range of topics and encourages students to think like Mathematicians. Topics covered in Year 9 include: Number, Measurement, Angle Geometry, Algebraic Patterns and Graphs, Statistics, Pythagoras, Transformations, Algebraic Expressions and Equations.

Science

In Science at LPHS you get to be a Mythbuster and find out how things really happen. You will be doing investigations and experiments of your own as well as finding out what other people have discovered in their search for the "whys" and "hows" of the world around us. In the Junior school you study a little bit of everything – electricity, acids and bases, plants, atoms, animals, compounds, rocks, light and optics, reproduction, chemical reactions, forces, volcanoes, motion, heat and more. You will learn about how we impact the environment and how we develop new technologies such as new materials and medicines. All of your lessons will be in a laboratory and your teacher will be a specialist Science teacher. You will work with lots of equipment and develop your inventive ideas, your practical skills and your powers of observation and deduction. Science at LPHS is often fun and always interesting.



Social Studies

Social Studies is about people and places, past, present and future. In keeping with the Aotearoa New Zealand History Curriculum and the revised Social Sciences Curriculum, our course explores local, national and international contexts in a mix of studies that emphasise high levels of student input and involvement. We use a wide range of resources and learning approaches to provide students with knowledge of and insights into people's experiences and responses in different times, places, situations and contexts as they develop their knowledge and their critical skills. Our Year 9 Course takes the theme of "Finding Our Place" as a point of departure to explore issues affecting the past, present and future of our city, our country and our world.



THE ARTS

Art - Half Year

Art at LPHS is designed to expose our students to the techniques, processes and thinking skills required to make well crafted and considered artworks.

During the half-year course, we cover the fundamentals of art-making, with a focus on drawing, painting and basic photographic conventions.

Students use the work of established artists to analyse and think about the context of art-making.



Dance - Half Year

The Dance course is innovative and fun. It focuses on developing your ability to self-choreograph, perform and explore a range of dance styles. These include street dance, Māori dance or other ethnic styles. The course ends with an evening show for parents/whanau and friends. Other performance opportunities include ShowQuest, Kapa Haka, and other performance evenings. All you need is a sense of rhythm and the willingness to learn. This is a foundation course that will teach the basic skills needed for higher level study of Dance.



auahatanga • hiringa • kanorau

Drama - Half Year

The Drama course is fast-paced and exciting. It focuses on three major aspects of acting: improvisation, physical theatre and scripted work. All lessons aim to help you develop your individual talents as well as your co-operative team working skills. The course ends with a show performed to an audience.

In small groups you will explore a range of topics. You will improve your vocal skills, movement and confidence during the course and this will impact on other subjects. All you need is a positive attitude and the willingness to try your best. This is a foundation course that will teach the basic skills needed for higher level study of Drama.



Music - Half Year

This is an introductory course which will provide students with basic skills in group performance, composition, music theory, research and musical analysis. It will provide the learning required for students who wish to carry on with Music study at a higher level and places particular emphasis on learning about New Zealand Music. No prior knowledge is assumed, but extension opportunities are available for students who have prior music learning. Practical skills taught focus on basic guitar and keyboard skills, with the opportunity to try a range of other instruments and to rehearse and perform a song as a member of a classroom band.



creative • inspiring • diverse

LANGUAGES

French - Full Year



In Year 9 French you will learn to communicate with French speaking people through the skill areas of listening, speaking, reading and writing. You will take part in a pen pal programme with a French school to use these skills in an authentic context. Learning about the language and culture of la Francophonie will be interconnected through topics such as exchanging personal details, preparing and learning about French dishes, finding out about where your pen pals come from and what differences and similarities you both have in areas such as school, free time, family life and other areas the class is interested in.

Japanese - Full Year



In Year 9 Japanese you will learn to communicate in Japanese in the skill areas of listening, speaking, reading and writing. If you have learnt some Japanese before that is great, but not necessary. We will cover topics such as greetings, numbers, weather and how to talk about yourself and your family in a range of contexts. You will also learn to read and write hiragana, some katakana and some kanji. This means that you will be reading and writing in basic Japanese scripts! You will also learn about the language and culture of Japan.

Korean - Full Year



Year 9 Korean, the course is designed to develop students' confidence and competency in communicating in simple Korean as well as their cultural awareness and understanding. The four main skills of speaking, listening, reading, and writing will be developed with various topics. This course will also give students the opportunity to experience and appreciate Korean culture. Contents are: All about me, Sports & Hobbies, Eating & Drinking, School Life. These contents are not limited as students' voices will be welcomed, acknowledged, and heard in terms of content choice and class activities.

German - Full Year



In Year 9 German you will learn to communicate with German speaking people through the skill areas of listening, speaking, reading and writing. You will take part in a pen pal programme with a German school to use these skills in an authentic context. Learning about the language and culture of the German-speaking world will happen through topics such as exchanging personal details, preparing and learning about German dishes, finding out about where your pen pals come from and what differences and similarities you both have in areas such as school, free time, family life and other areas the class is interested in.

Māori - Full Year

'Ko te Reo, te Mauri o te mana Māori'
The Māori language is the life force of all things Māori.

In Year 9 Māori language, our main focus will be on listening to and speaking Te Reo on topics such as whanau, time, school, foods, pets, commands and directions, feelings, clothes and colours. In Tikanga you will learn about the pōwhiri process, Māori mythology and proverbs, He Mihi, and Marae concepts.



TECHNOLOGY - What is Technology?

Technology is intervention by design through the exploration and application of specialist skills and knowledge.

In Technology we develop a plan to allow us to solve a problem. We plan to use resources efficiently, solve authentic design problems through testing/modelling and evaluating, and manufacture individually developed outcomes. Innovation and creativity are key driving forces in our Technology programmes with a focus on experiencing a wide range of skills and knowledge to prepare students for senior levels.



Food Technology - Half Year



In Food Technology students will master a base of practical cookery skills as well as food safety and hygiene related practices used in the kitchen. With support they will learn more about and use the technology design process to solve authentic food related problems. Students will be encouraged to work with others, show initiative and be creative when making their food products.

Projects include Culinary Skills, Design and Make a Wrap, Batter in a Bottle and Design and Make a Gingerbread Whare. Students work their way through these units gaining the knowledge and skills they need in order to progress into a full year course in Year 10.

Design & Visual Communication (DVC) Graphics - Half Year



The DVC course for year 9 students is an exciting opportunity to dive into the world of visual communication, with a focus on architectural design.

Throughout the course, students will learn about the elements and principles of design that they apply to their design ideas, gaining hands-on experience using traditional approaches like sketching and model making as well as digital tools like computer-aided design (CAD) software and 3D printing. Students will work on a variety of projects that showcase their skills and knowledge. DVC can lead to exciting careers with an emphasis on creativity and problem-solving skills.

Digital Technology - Half Year



Digital Technology offers students the opportunity to engage with digital media and understand the processes behind its many amazing uses. Understanding how we are influenced by media, how to pitch a product, design and make a film trailer, and use a range of digital technologies to learn and have fun.

They will have opportunities to work with a variety of equipment and editing software to create posters and film trailers as well as understand chatbots, and digital footprints and develop an understanding of where technology may be heading. We use Adobe Creative Suite (Photoshop, and Premiere Pro for Film Editing) and other online options. We also promote the superpower of touch-typing!

Fabric Technology - Half Year



In this six-month semester of Fabric Technology, Year 9 students will have the opportunity to develop sewing machine skills and use other sewing machine types such as overlockers and embroidery machines.

Students are supported to develop skills from the Technology Curriculum such as: researching, designing, planning, outcome development and evaluation.

Students will be able to use a variety of materials creatively to produce textiles items. Use of hand skills for making and finishing is also a part of the production process.

Hard Materials Technology - Half Year

At Year 9 we explore the skills, equipment and knowledge required to work with a range of materials including wood, plastics, metals, manufactured boards and finishes. We also investigate the use of Timber joints and their application in a small storage unit (Waka Huia)

An extension project is based around its handle design and graphics that can be laser printed onto it. Study in Hard Materials Technology may lead on to careers in technology-related innovation and design, product design and building and furniture trades.



Product Design Technology - Half Year



Product Design has a focus on problem-solving and analysis of existing designs to cater for everyday issues. Students are supported to learn that the testing and trialling of ideas is at the heart of good design practice and through the use of mock-ups and models design decisions will be well informed.

At year 9 a range of techniques, materials and processes will be explored in which students will learn skills to complete their own product design process. This may include CAD (Computer-Aided Design), laser cutting and 3D printing.

Students who wish to apply for a **Logan Park Year 9 Scholarship** can find this information (under Enrolments) on the website www.lphs.school.nz

Sport

We cater for beginners through to serious elite athletes across a range of sports. With over 30 sports on offer there is something for everyone.

The Logan Park High School Sports programme is inclusive, fun and offers competitive sporting experiences for everyone who is keen to be involved.

Over 60% of our students play sport compared to the national average in New Zealand secondary schools of 54%.

Our dynamic Sports Director and staff responsible for a sport work hard to include all new students who want to play sport in a team or programme. All of our Sports and PE staff have had regional or national representative honours and understand the thrill of excelling in sports as well as participating just for fun. They work with individuals and teams to support them towards their goals and dreams. We welcome and value parent and external coaches and managers as part of our team.

Student Leadership, Coaching, Umpiring and Managing are encouraged and supported through our Student Sports Council. Many of our senior students coach junior teams.

We also run one of the best Lunchtime Fun Sports programmes in Otago.

In 2022 and 2023 students achieved Otago and national representative honours in Athletics, Badminton, Basketball, BMX, Football, Futsal, Handball, Hockey, Mountain Biking, Petanque, Sailing, Tennis and Volleyball.

Sports on offer:

Athletics	Futsal	Rock Climbing
Adventure Racing	Handball	Sailing
Badminton	Hockey	Skiing/Snowboarding
Basketball	Ice Hockey	Surfing
Cricket	Kendo	Swimming
Cross-Country	Netball	Tennis
Curling	Orienteering	Touch Rugby
Dodgeball	Petanque	Volleyball
Duathlon/Triathlon	Rowing (Club)	Waterpolo
Football	Rugby	



Music



There are many opportunities for keen young musicians to participate in music-making with others through extra-curricular activities at Logan Park. Some of these activities require a certain level of prior experience (and possibly an audition) while others are for all interested students.

These opportunities include:

Music Tuition Opportunities - the school offers tuition on woodwind, string and brass instruments, as well as drums, bass, guitar, piano and voice.

Choir - under the direction of Ms Brown. For all keen singers.

Orchestra - under the direction of Ms Manowitz.

Jazz Band - under the direction of Mr Cornish. By audition.

Rock School - for Year 9 and 10 students who have prior experience on a rock band instrument, and wish to develop their skills working in a group with others.

Chamber Music groups - for students who wish to play an orchestral instrument or piano in a small group, working towards competing in the Chamber Music NZ competition.

Rehearsal spaces - rehearsal spaces are available for students to use during lunchtimes. Many students use the facilities available to rehearse their own bands and groups.



Drama



Junior Shakespeare Showcase	Dance Week	Showquest / Theatrefest
End of Semester & End of Year Show	Sheila Winn Shakespeare Festival	Links to Playhouse productions
Theatresports / Improv	Links to Professional Theatre Productions	Musicals

Clubs, Cultural & Service Groups

Amnesty International / Politics	Debating	Interact Club (Junior Rotary Service Group)
Art Homework Club	Diversity Group	International Food Festival
Art Prefects	DnD Club	International Languages
Book Club	E-Sports	K-pop / K-drama Club
Charities Club (including 40 hr famine)	Enrichment Clubs	Kapa Haka
Chamber Music Contest	Enviro Club	Karaoke Week
Chess Club	Film Club (including 48hr Film Competition)	Knitting Club
Community Outreach Homai Ki te Hapori	Fitness & Weights Room	Librarians
Computer Club	Formal Committee	Maths Enrichment Club



Mau Rākau Club	
MUNA - Model United Nations events	
Outward Bound Courses	
Overseas Trips (Australia, China, Vietnam, Gallipoli, New Caledonia, United States, South Korea)	
Peer Mentoring	
Photo Club	
Public Speaking	
Competitions	Classics Quiz
	French speaking competitions - Alliance Française
	Humanities (History and ODT Extra) quizzes
	ICAS Competitions
	Maths Competitions (including O'Mathalon)
	Social Studies
	Spelling Bee (NZ) and ODT Spelling Quiz
Year 10 Science Quiz / Year 13 Science Quiz / Senior Chemistry Quiz	
Race Unity celebrations	
Robotics Club	
Rockquest	
Running Club	
Science Club	
Science Fair	
Songwriting Club	
Spirit of NZ voyages	
Student Council	
Taekwondo Club	
Talent Quest / Lip Sync	
Ukulele Group	
Wellbeing Team	
Writers' Group & Writing competitions	



ACADEMIC PATHWAYS

	Year 9 & 10 Subjects	
Learning Area	Compulsory	Options
Languages	English	French German Japanese Korean Māori
Mathematics	Mathematics	
Science	Science	
Social Science	Social Studies	
Health & Physical Well-being	Health & Physical Education	
The Arts		Art Dance Drama Music
Technology		Design and Visual Communication Digital Technology Fabric Technology Food Technology Hard Materials Technology Product Design Technology
Career Education		
Accounting		

Year 11 NCEA Level 1	Year 12 NCEA Level 2	Year 13 NCEA Level 3
Compulsory	Options	Options
English	French German Japanese Korean Māori	English French German Japanese Korean Māori
Mathematics A or Mathematics B	Calculus Mathematics Statistics	Calculus Statistics
Science	Biology Chemistry Physics	Biology Chemistry Physics
	Geography History	Geography History Psychology
	Health Physical Education	Health Physical Education
	Art Dance Drama Music	Dance Drama Media Studies Music Painting Photography
	Computer Science Design & Visual Communication Fabric Technology Hard Materials Technology Hospitality Product Design Technology	Computer Science Design & Visual Communication Fabric Technology Hard Materials Technology Hospitality Product Design Technology
	Future Pathways	Gateway
	Accounting	Accounting

In special cases, other subjects can be studied via distance learning.

Weekly Feedback on Attitude to Learning

We are keen to communicate regularly with parents/whanau to support all of our young people to develop positive learning habits. We provide weekly feedback (available in the Caregiver portal) for all students in Year 9-11. Every teacher provides a grade in their subject which gives a quick snapshot for parents to see how their child is engaging and working. Many parents find it a useful starting point for conversations with their teenagers about school.

The grade is based on teacher observation of students' Learning Habits over the week in three categories:

1. **Readiness to learn:** this includes punctuality (being at class on time), having required books and equipment (pens, rulers etc, or PE gear, as detailed by subject teachers) and wearing correct uniform.
2. **Engagement with learning:** this includes behaviour, following instructions, participation in class and application to activities.
3. **Task completion:** including homework.

There are 4 grades:

- 4 = **Outstanding** learning habits observed
- 3 = **Good** learning habits demonstrated
- 2 = **Inconsistent** learning habits causing concern
- 1 = Learning habits causing **significant concern**

The week runs from Friday period 1 until Thursday period 6.

Generally a 3 (good learning habits) is what we expect from most students, whereas a 2 (inconsistent and causing concern) indicates there are areas for improvement, for example with homework completion, and a 4 is reserved for outstanding learning habits observed across the week.

Over 90% of surveyed parents appreciated the Weekly Feedback.

More detailed academic reports and comments are issued regularly throughout the year.

Weekly Feedback is **NOT** an indication of academic performance or ability.

You are encouraged to contact subject teachers by email if you have any questions or concerns.



Junior Diploma

What is the LPHS Junior Diploma?

We know that school and learning is about much more than academic progress. It is more holistic and ultimately is about growing really good young people.

Junior Diploma is our way of encouraging and acknowledging the many qualities and values that set people up to be happy and successful in the longer term.

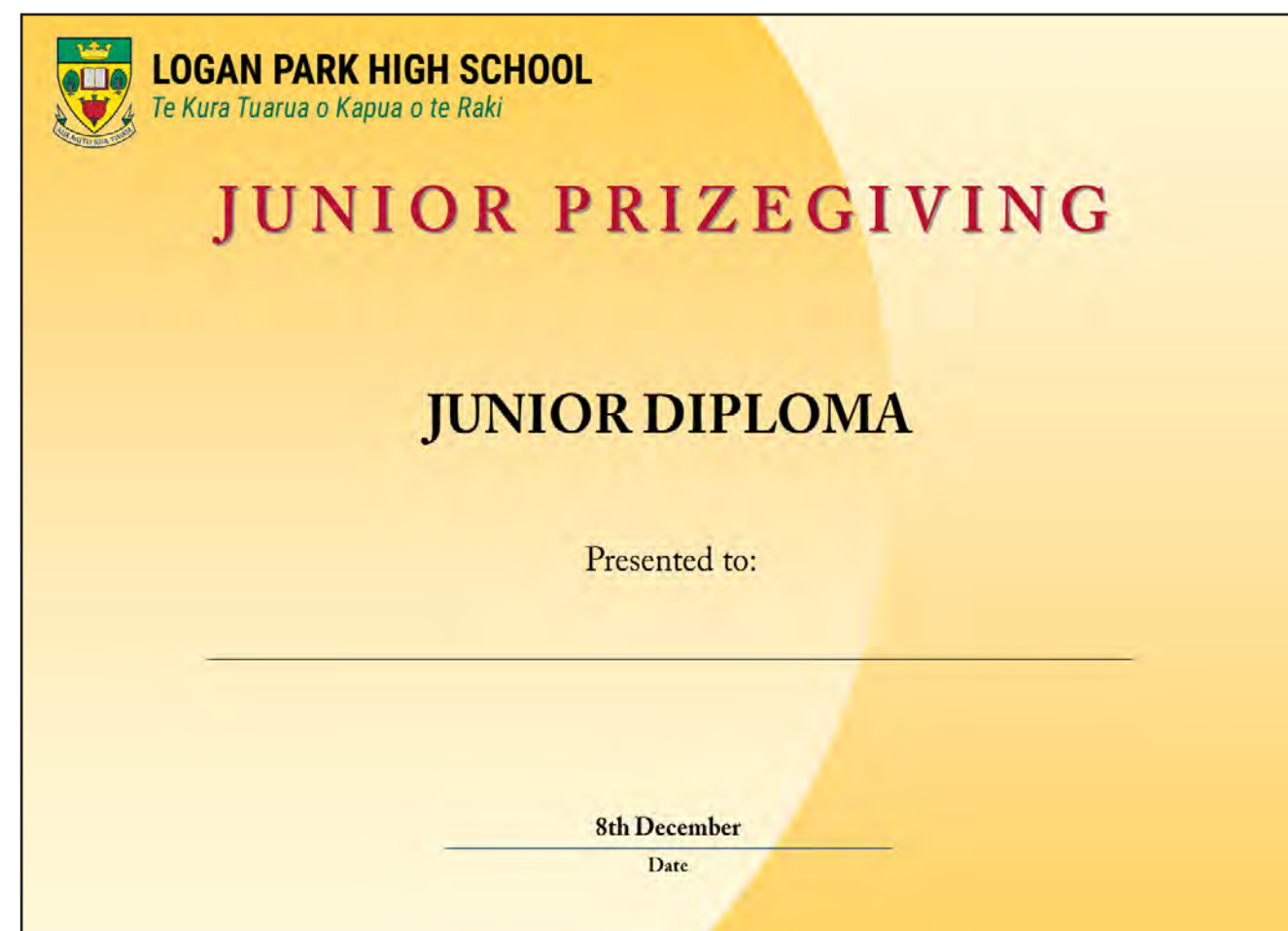
We aim to inspire a love of learning where our students develop their full potential and contribute positively to their communities.

We recognise that the ability to regulate emotions, delay gratification, respect other people and their points of view are important life skills.

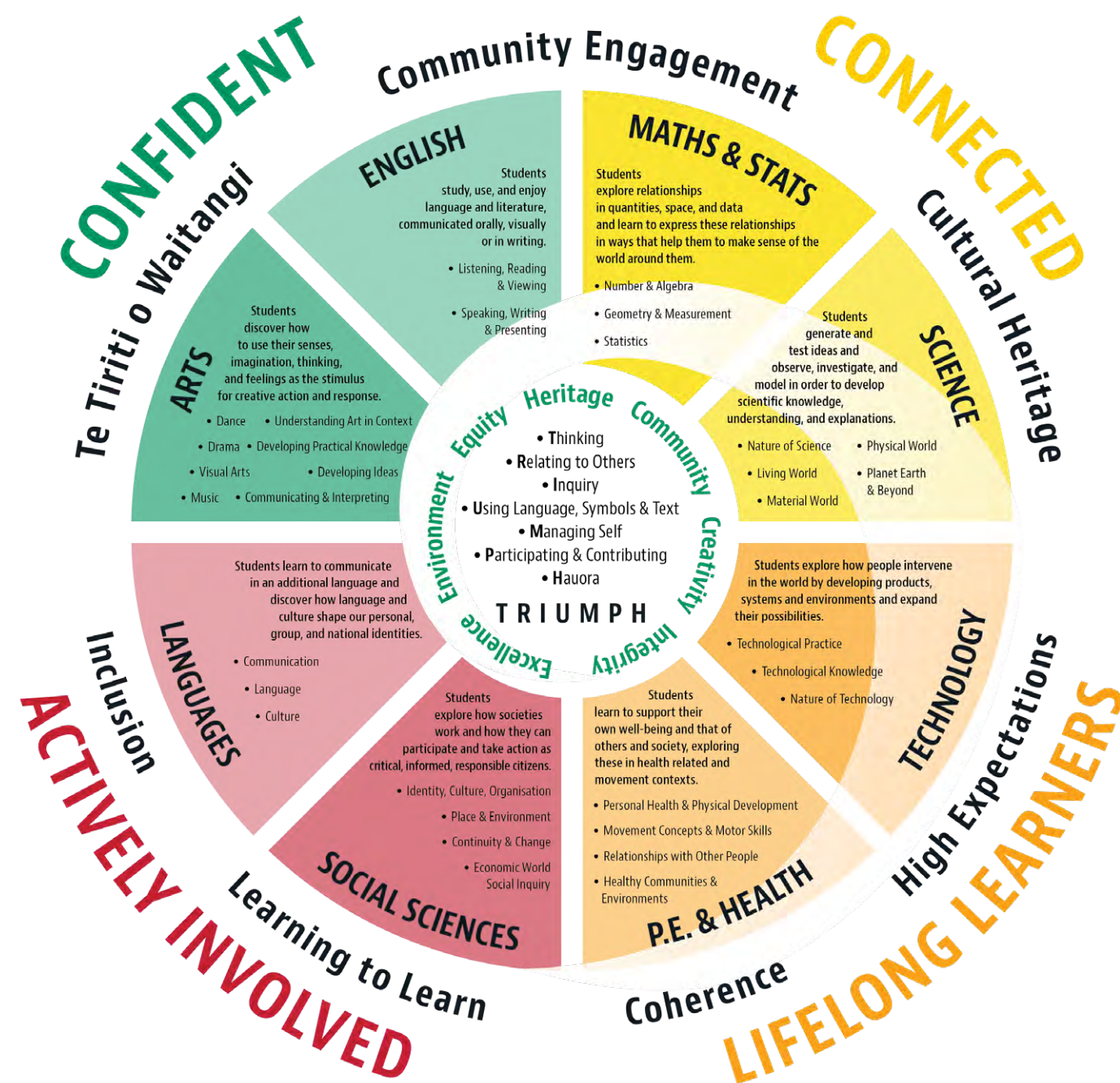
Junior Diploma acknowledges social and co-operative skills, engagement with learning and perseverance including task completion. Participation in class and in the wider life of the school is valued. Being a good person who demonstrates respect, resilience, integrity, motivation and citizenship is actively encouraged.

Being involved in activities outside the classroom can include sports, cultural pursuits, service, leadership and citizenship.

Junior Diploma can be achieved, or achieved with Merit or Distinction.



Logan Park High School Curriculum Kaupapa



Our vision is to inspire lifelong learners with a strong sense of their past, place and future.

The Logan Park whānau is respectful, motivated and inclusive.

2022 NCEA Results and Scholarships

Our students do well at all levels of NCEA and our National NZQA Scholarships are particularly impressive, especially when adjusted for our roll number.

Well over half of all our students entering NCEA are endorsed with Merit or Excellence, which is well above the national average.

And the important Level 3 University Entrance results are well above at 62% compared to the national average of 50%.

Every year our students do well in NZQA Scholarship exams. Scholarships are awarded to the top 2-5% nationally.

2022 NCEA Endorsements		
	Logan Park	National
Level 1	68%	51%
Level 2	59%	41%
Level 3	54%	41%

2022 NCEA Results		
	Logan Park	National
Level 1	74%	65%
Level 2	78%	75%
Level 3	69%	68%

University Entrance	Logan Park	National Average
	62%	50%
2022 National Academic Scholarships	Logan Park	National Average
	20	8



School Prefects 2023

Recent High Achievements

ACADEMIC

Featured by Education Review Office as 1 of 12 Top Performing Schools in NZ for Curriculum Design
Consistently in Top 2 Schools for Academic Performance in Otago/Southland for NZQA Scholarships
Over \$400,000 in New Zealand University top scholarships awarded to our Year 13 school leavers
Above National Average in NCEA Certificates and in Merit/Excellence Endorsements
Top students in NZ results in ICAS English, Science, Maths, Digital Technology
Perfect score in the 2021 Computational and Algorithmic Thinking Competition
NZ Physics and Maths Competition South Island finals - top 3 placings 2022
Top Programmers in National Robotics RoboCup
Architectus Grapple Scholarship winners 2022
Selection for John Hopkins Centre for Talented Youth (Probability and Game Theory)
NZ Youth Enviro Leaders selection for National Forum
NZ Model United Nations New Zealand selection
Prime Minister's Excellence Award in Technology 2021/2022
Otago Science Fair Awards and Premier Awards 2021-22
Rotary National Science and Technology Forum selections 2021
NZ Biology and Chemistry Olympiads 2021
Otago Year 10 Science Quiz Champions 2021
Otago History Quiz Teams at Year 11, 12, & 13 winners for three of the last five years
Students studying papers at Tertiary level gaining A+ grades each year

CULTURAL

Top in NZ Sargeson Short Story Writing Competition 2021 / 2022
Otago Southland ShowQuest - top Dunedin school 2021
Otago Southland Showquest Live Music Award 2021 and Best Use of Video Wall 2021
Otago Smokefree Rockquest – Finalists and Combined Band Winners 2021
Top NZ Actors selected for National Shakespeare SGZNZ Workshops 2021 - 2023
Actors selected for Shakespeare Globe Centre New Zealand Young Shakespeare Company trip to the Globe Theatre in London - 2022 and 2023
SGZNZ National Awards - Best Communication, Best Connection and Outstanding Individual Comic Awards 2023
and NSSP Selector Special Award for Professional Excellence Award 2023
SGZNZ University of Otago Sheilah Winn Shakespeare Best Movement and Choreography 2022
SGCNZ University of Otago Sheilah Winn Shakespeare Best Realisation of Text 2022
SGZNZ University of Otago Sheilah Winn Shakespeare Festival - Award for Best Ensemble - 2021
SGZNZ Otago winners Best Teacher Directed piece 2023
SGZNZ Otago Outstanding Stage Performance Award and Notable Performance Award 2023
Otago Polson Higgs Public Speaking runner-up & Lions runner-up in Otago/Southland 2021/22
First and other top placings in National Schools Poetry Awards
Second in the National 2022 Charles Brasch Young Writers' Essay Competition
2 student writers selected for the NZ Youth Mentorship Programme by NZ Society of Authors 2022
Published Writers and Poets in Otago and New Zealand Publications 2021-2023
Otago Award Winning Writers and Poets (WriteNow)
Otago Debating Regional Winners / Otago Representatives and Otago Best Speaker Award 2023
Mana Pounamu Young Maori Achievers Awards (senior and junior yearly)

Pacific Island Student Recognition Awards (senior and junior yearly)
CMNZ Chamber Music Regional Finals Awards - Overall winning group 2020/2021. National finalist 2021
CMNZ Winner Performance of NZ work 2021 & multiple awards 2021
CMNZ Highly Commended award 2022
Southern Jam Youth Jazz Festival - Runner up Best Big Band 2021. Gold Award. Award for Best Saxophonist & Adjudicator's Choice Award 2021. Three members selected for Festival All Star Band
Dunedin Youth Jazz Festival 2021 - Best Big Band, Best Combo. Awards for best trumpet, alto saxophone, tenor saxophone, piano, trombone, bass, drums and most promising baritone saxophone player
Dunedin Youth Jazz Festival 2022 - Best Big Band, Best Combo. Best performance of contemporary piece. Awards for best bass, tenor saxophone, alto saxophone, piano, improvised solo and most promising baritone saxophone player
Young Jazz Band-It Competition Big Band finalist 2022
New Zealand Jazz Improvisation Competition 2022. Two finalists, one gaining third place
Student selected for All Star Big Band at the Christchurch Big Band Festival 2022
Big Sing Regionals – Highly Commended 2021. Qualified for South Island Cadenza and received the Wharauroa award 2022. Awarded the Spirit of the Festival award in 2023
Finalist in Youthtown Songwriting Competition 2022/2023
NZ rep in Bagpipes Youth Band 2021
Otago Winners in French Speaking Competition 2022 and French Exchange 2023
Celebrate Art Otago Supreme Art Award 2022
RASA Dance Crew - national finals 2021
Otago Trustpower Youth Community Spirit winner
Youth MP for Parliament 2022

SPORTING

Higher than national average in school sport participation every year
NZ National Service to Sport Awards to 2 teachers
New Zealand honours in BMX, Ice Hockey, Gymnastics, Handball, Diving
New Zealand Volleyball training camp
NZ Petanque National Championships Gold Medal
South Island Hammer Champion/record holder 2022
South Island Champions and top 3 Placings in Athletics 2022 - Track and Field
South Island Badminton Team member and Otago U17 Boys Champion
South Island Duathlon Champions
Otago Regional Representatives in Athletics, Basketball, Futsal, Football, Badminton, Sailing, Hockey, Taekwondo, Kendo, Cross Country, Surf Lifesaving, Surfing, Handball, Triathlon, Mountain Biking, Table tennis, Softball, Volleyball, Ice Hockey, Diving, Petanque.
Otago Esports Brawl Winners 2022
Otago / Southland Chess Champion Team 2022 and Otago Champions 2021
Otago / Southland Petanque representatives 2022
Otago Champions in Athletics 2022 and 2023- Track and Field
Otago Orienteering Junior Boys Champion 2022, and second place 2022
Challenge Wanaka Triathlon U16 Boys team event 2nd place, U19 Mixed Team 3rd place 2023
Otago Southland Cross Country Mixed Relay 15+ Champions 2022
South Island Secondary School Boys Hockey Tournament Tier 4 winners 2022
Satellite Volleyball Girls Tournament 3rd place 2023

Useful Information

Assemblies

School assemblies are held on when needed to provide opportunities for the Co-Principals, teaching staff and senior student leaders to address the students. Visitors from the local, national and international community often entertain on diverse topics. Student leaders showcase what's on at our school. Regular House assemblies provide opportunities for House Deans and Prefects to run House quizzes and organise sports teams for lunchtime competitions.

Attendance/Absence

Students are expected to remain on the school premises for the whole school day, including lunchtime, and to be present at all classes, studies and Group time. All students' attendance is monitored every period electronically. Absences are reported to parents/caregivers by text during the day if office staff have not received notification about a student's absence. Attendance contact details are on the website.

Sickness

If unwell, students should stay at home until they have recovered. Parents/caregivers must notify the school Office by phone (477 3586) or email (absences@lphs.school.nz) as soon as possible if students are away sick.

Sickness at school

If students are sick while at school, they should report to the School Office, whether or not they have sent a text to parents/caregivers on cell phones to pick them up from school. This is because the school must account for a student's attendance at school.

Cellphones, Computers and Technology Devices, BYOD

Students can choose to bring technology devices of their choice to school. They may be used with permission during class time for class work. The school has 400+ computers and a comprehensive wifi network for student use. Identification Cards are provided and act as a card for copying / printing.



Library

The school library is open from 8.20am until 4.30pm. More information, and an online catalogue, is available at opac.lphs.school.nz

Donations/Parent Contributions/School Costs

Parents/caregivers will receive an invoice for the costs for the school year. A general activity donation (which is not a compulsory charge) is asked for and is tax deductible. All costs are outlined on the school website. *(Please note, all prices are based on current information and are subject to change.)*

Communication

The school communicates with parents and caregivers in a variety of ways, primarily through our website.

- Website: www.lphs.school.nz
- Email: office@lphs.school.nz
- Phone: +64 3 477 3586
- Newsletter: Park Press
- Daily Notices (found on the website)
- MUSAC Edge Caregiver Portal (see below)



Musac Edge Caregiver Portal and Edge App

The Musac Edge Caregiver Portal allows parents and other caregivers online access to see information about their children. The Portal contains student and caregiver details, student timetables, daily and year attendance, school reports, weekly feedback on attitude to learning, NCEA results and student finance details.

The majority of what can be seen on the Caregiver Portal can also be seen in the Edge App.

Once a student has started at Logan Park we will send out information on how to access and use

both the Caregiver Portal and the Edge App. Students can also access their own Student Portal and the Edge App works for them as well.



Homework

Regular homework is set by teachers and helps students develop independent study habits. Homework and Task Completion is reported on in school reports and in the Junior Diploma. Year 9 and 10 students are expected to do regular homework and assignment work to supplement class work. Parents can help by:

- Ensuring conditions within the house are suitable for study.
- Checking on homework and assignment completion with their teenager(s).

Canteen / Cafeteria

LPHS has a very popular cafeteria catering for everyone from vegans to meat-lovers. Please visit our website at www.lphs.school.nz to see the prices and menu.

Bus Services

Students from all over the city attend Logan Park High School. To find out about bus routes please see our website www.lphs.school.nz or the following websites:

- <https://www.orc.govt.nz/public-transport/dunedin-buses>
- <http://trackabus.co.nz>

Alternatively contact Claire Metcalfe (cam@lphs.school.nz) from the school office for more information.

House Deans

Students are placed in a House and Group for the length of their schooling at LPHS, which reflects our whanau values.

Clayton
Omimi
Aoraki
Toroa

Dr Thompson
Mrs Summerfield
Mr Fielding
Ms Caulfield

murray.thompson@lphs.school.nz
michelle.summerfield@lphs.school.nz
paul.fielding@lphs.school.nz
yvonne.caulfield@lphs.school.nz



Pastoral Care and Counselling Support

Sometimes, things can get a bit tricky - both at school, and outside of school. If you would like to talk to someone about how things are going for you, there are plenty of people at school who will listen to you and help you. Your Group teacher, your Dean, the Guidance Counsellor, the Public Health Nurse and outside agencies are all available to you. If the person you choose to speak to can't solve your problem, they will know someone who can.



Lockers

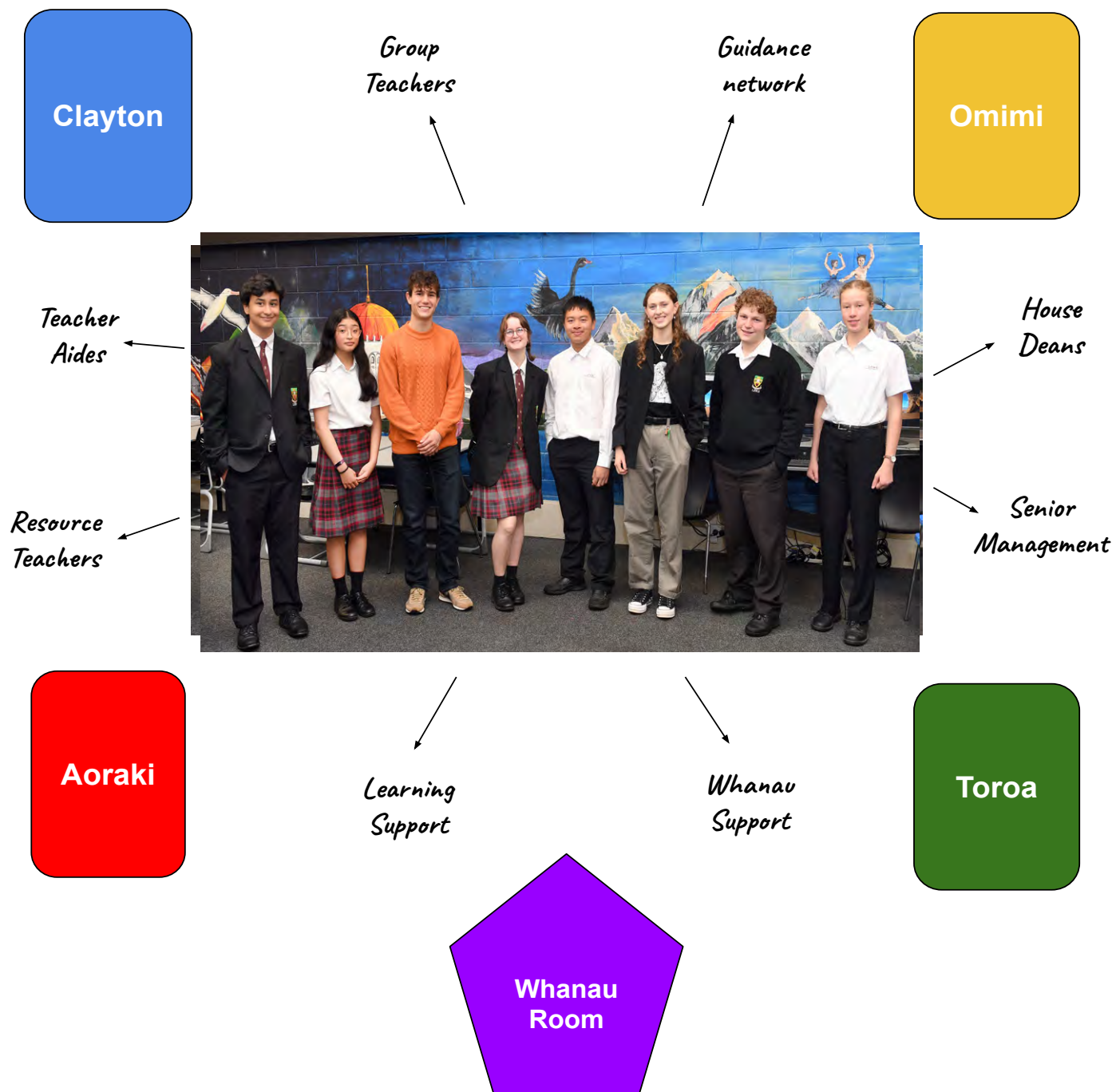
On request, and payment of \$25 to the school Office, a student locker can be allocated to store personal property.

Stationery

Lists of required stationery are available from the school Office and on our website: www.lphs.school.nz

GETTING TO KNOW YOU AND YOUR WHANAU

From day 1 we support you in our House and Group Whanau system to be a positive LPHS citizen. As a Year 9 student, you have a special Orientation Day getting to know other new students and the layout of the school classrooms and specialist facilities.



You are assigned a Group Teacher, who will look after your well-being and academic progress throughout your time at school.

At the beginning of each year we have a House Day to get to know new students.

Each of the four Houses is made up of eight Groups and has a House Dean who takes overall responsibility for you and helps you sort any problems you have at school. Your House Dean and Group teacher will keep in touch with your whanau or caregivers.

Junior Uniform - Year 9 and 10



Kilt (or Trousers)



Trousers (or Kilt)



Long or Short Sleeved White Shirt



Jersey (or Polar Fleece)

* Varying shapes / cuts and options available



Polar Fleece (or Jersey)



Vest (optional)



Black Socks



Over the Foot Long Black Tights

LPHS PE and Sports Uniform Items

Note: Junior students can wear the PE and Sports uniform to/during/from school



PE/Sports Top



PE/Sports Long Shorts



PE/Sports Shorts



Black Socks



Sports/Gym Shoes

ACCEPTABLE ✓

Only suitable PE / Sports / Gym shoes are permitted to be worn with the PE and Sports Uniform
NO skate / sneaker / platform / heels / boots / street shoes



LPHS Black Hoodie (optional)



LPHS Black Long sleeved Warm up Top (optional)



Senior Uniform - Year 11 and 12



Kilt (or Trousers)



Trousers (or Kilt)



Long or Short Sleeved White Shirt - with top button



Tie



Blazer

* Varying shapes / cuts / options available

Black Socks



All uniformed students:
NO skate / sneaker / platform / heels / boots / street shoes

ACCEPTABLE ✓



UNACCEPTABLE ✗



The following clothing items are acceptable - if they DO NOT contain advertising or branding: Black Scarf, Plain Black Beanie, Plain Black Raincoat / Puffer Jacket and Plain Black Sunhats (to be worn outside in Terms 1 & 4 only).

All Uniformed Students - Year 9 - 12

- Cosmetics, nail polish and jewellery are not to be worn unless it is a small plain stud or ring in the ear lobe or a cultural pendant. Facial piercings are **not** allowed.
- Students must be clean shaven.
- Hairstyles and Colour: only natural hair colours are permitted. The Co-Principals have the final decision.
- White or black thermals can be worn **but not seen**.
- The 3 approved uniform suppliers - **NZ Uniform, Uniform Group and Adventure Outfitters**.

Year 13 Dress Code

- Year 13 students are expected to wear clean, tidy and appropriate clothes for a workplace environment
- Examples of **unacceptable** wear:
 - Damaged or dirty or revealing clothing.
 - Excessive jewellery or make-up
 - Facial hair / moustaches or beards.
 - Clothing with illustrations or language considered inappropriate or offensive to our school values.
 - Senior Management will make the final decision regarding the suitability of dress and grooming.



Daily Routines Timetable

Monday		Tuesday		Wednesday		Thursday		Friday	
1:	(8.55-9.50)	1:	(8.55-9.40)	1:	(8.55-9.50)	1:	(8.55-9.45)	1:	(8.55-9.50)
Group (9.50-10.10)		Group/Assembly (9.40-10.05 / 10.05-10.30)		Group (9.50-10.10)		Group (9.45-10.05)		Group (9.50-10.10)	
2:	(10.10-11.05)	2:	(10.30-11.15)	2:	(10.10-11.05)	2:	(10.05-10.50)	2:	(10.10-11.05)
Interval (11.05-11.25)		Interval (11.15-11.35)		Interval (11.05-11.25)		Interval (10.50-11.10)		Interval (11.05-11.25)	
3:	(11.25-12.20)	3:	(11.35-12.20)	3:	(11.25-12.20)	3:	(11.10-11.55)	3:	(11.25-12.20)
Lunch (12.20-1.10)		Lunch (12.20-1.10)		Lunch (12.20-1.10)		Lunch (12.40-1.30)		Lunch (12.20-1.10)	
4:	(1.10-2.05)	4:	(1.10-2.05)	4:	(1.10-2.05)	5:	(1.30-2.15)	4:	(1.10-2.05)
5:	(2.05-3.00)	5:	(2.05-3.00)	5:	(2.05-3.00)	6:	(2.15-3.00)	5:	(2.05-3.00)

Each day at Logan Park High School consists of five periods, except Thursdays which is a six period day.

Monday, Wednesday and Friday have the same timings. Tuesday mornings are shown **with assembly timings** (in two sections, the first for Clayton and Omimi, the second for Aoraki and Toroa. Students attend group when not at assembly). When there is no assembly, Tuesdays follow Monday timings. Thursdays have six periods so each period is slightly shorter than on the other days.

Logan Park High School (376) Enrolment Scheme - Effective from 20 July 2020

The guidelines for development and operation of enrolment schemes are issued under section 11G (3) of the Education Act 1989 for the purpose of describing the basis on which the Secretary's powers in relation to enrolment schemes will be exercised.

Home Zone

All students who live within the home zone described below (and shown on the attached map) shall be eligible to enrol at the school.

The Home Zone takes addresses on both sides of the boundary roads mentioned in the description unless otherwise stated. Starting from the intersection of Strathallan Street and Portsmouth Drive, the home zone follows:

- South-west on Strathallan Street until Andersons Bay Road
- North-west on Andersons Bay Road until the Dunedin Southern Motorway (SH1)
- South-west on the northern side of the Dunedin Southern Motorway (SH1) until King Edward Street
- North-west on King Edward Street until the corner of Ardmore Drive and Princes Street
- North on Princes Street until South Road
- West on South Road until Maitland Street
- North-west on Maitland Street until Stafford Street
- West on Stafford Street until William Street
- North-west on William Street until Serpentine Avenue
- West on the northern side of Serpentine Avenue until Hawthorne Avenue
- West on Hawthorne Avenue until Queens Drive
- North on Queens Drive until Preston Crescent
- West on Preston Crescent until Harcourt Street
- North-east on Harcourt Street until its intersection with Allison Crescent
- From the corner of Harcourt Street and Allison Crescent jumps north-east until the corner of Lawson Street and Huntley Avenue
- North-east on Lawson Street until Ross Street
- East on Ross Street until City Road
- North on City Road until Highgate
- North on Highgate until Stuart Street
- West on Stuart Street until Taieri Road
- North-west on Taieri Road until Nairn Street
- North-east on Nairn Street until Shetland Street
- North-west on Shetland Street until Helensburgh Road
- South-west on Helensburgh Road until Taieri Road
- North-west on Taieri Road until Wakari Road
- North on Wakari Road until Tanner Road (including Honeystone Street and Larkins Street)
- North-west on Tanner Road until Fulton Road
- North-East on Fulton Road until Islay Street (Booth Road)
- North on Islay Street until Leith Valley Road (including Hillswick Street)
- North on Leith Valley Road until Waitati Valley Road (including Thompson Road)
- North on Waitati Valley Road until Donald Road (including Miller Road and Waitati Valley Road to the north of Donald Road)
- East on Donald Road until Dunedin-Waitati Road
- North on Dunedin-Waitati Road until Double Hill Road
- West on Double Hill Road until Semple Road (including Clark Road)
- West on Semple Road until Steep Hill Road
- West and then north on Steep Hill Road until Waikouaiti-Waitati Road (SH1) (including Walker Road and Lawson Road)
- North-east on Waikouaiti-Waitati Road (SH1) until Whites Road
- East on Whites Road until the end of Whites Road
- From the end of Whites Road jumps south-east to the end of Russell Road, around 181 Russell Road
- South-east on Russell Road until Coast Road
- South-west Coast Road until Kilgour Street
- South-east on Kilgour Street until the end of Kilgour Street
- From the end of Kilgour Street jumps south-east the coastline
- From here travels south along the coastline until Strathallan Street.

Special Programmes

This priority category is not applicable at this school because the school does not run a Special programme approved by the Secretary.

Out of Zone Enrolments

Each year the Board of Trustees will determine the number of places which are likely to be available in the following year for the enrolment of students who live outside the home zone. The Board will publish this information by notice in a daily or community newspaper circulating in the area served by the school. The notice will indicate how applications are to be made and will specify a date by which all applications must be received.

Applications for enrolments will be processed in the following order of priority:

First Priority this priority is not applicable at this school because the school does not run a special programme approved by the Secretary for Education.

Second Priority will be given to applicants who are siblings of current students.

Third Priority will be given to applicants who are siblings of former students.

Fourth Priority will be given to any applicant who is a child of a former student of the school.

Fifth Priority will be given to any applicant who is either a child of an employee of the board of the school or a child of a member of the board of the school.

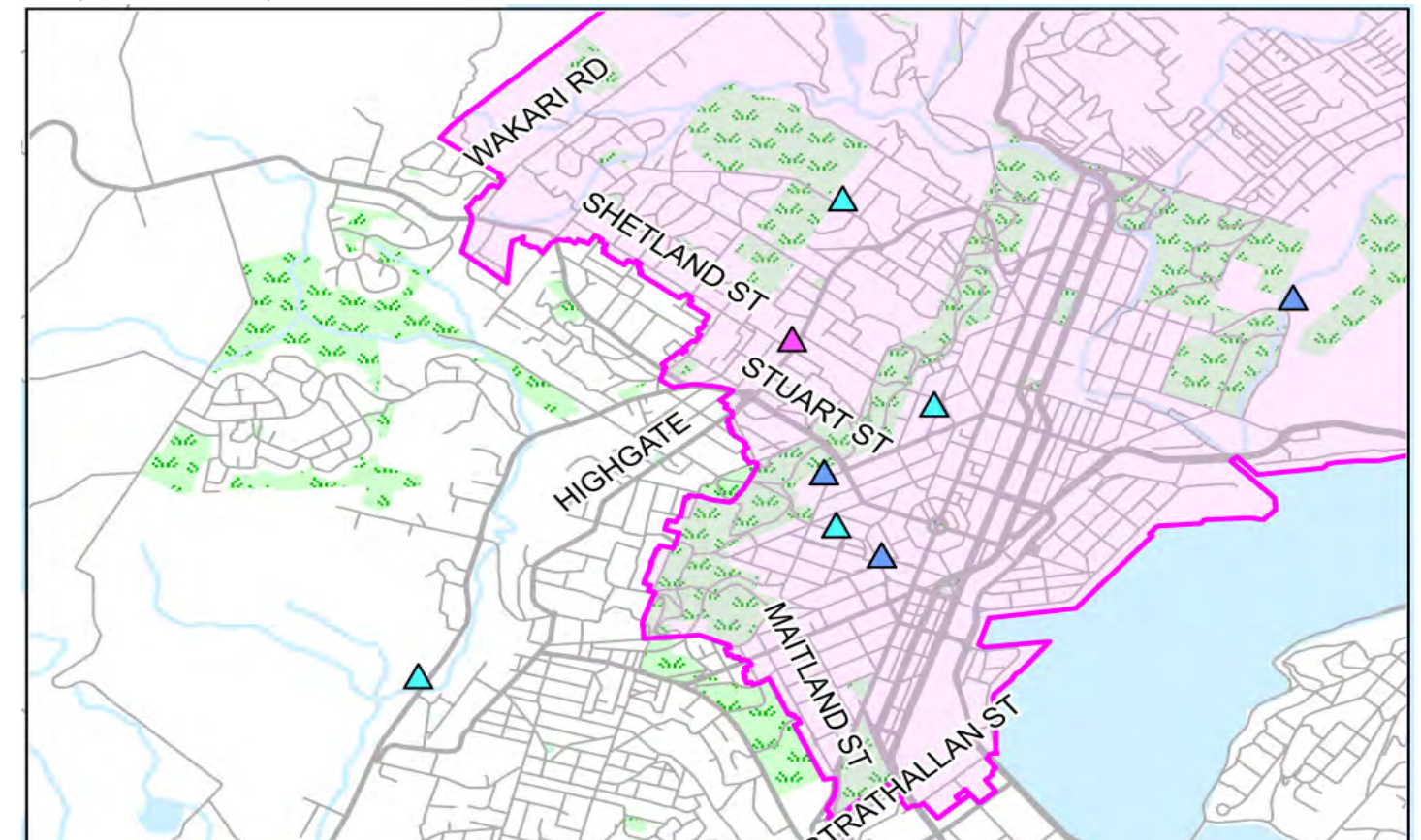
Sixth Priority will be given to all other applicants.

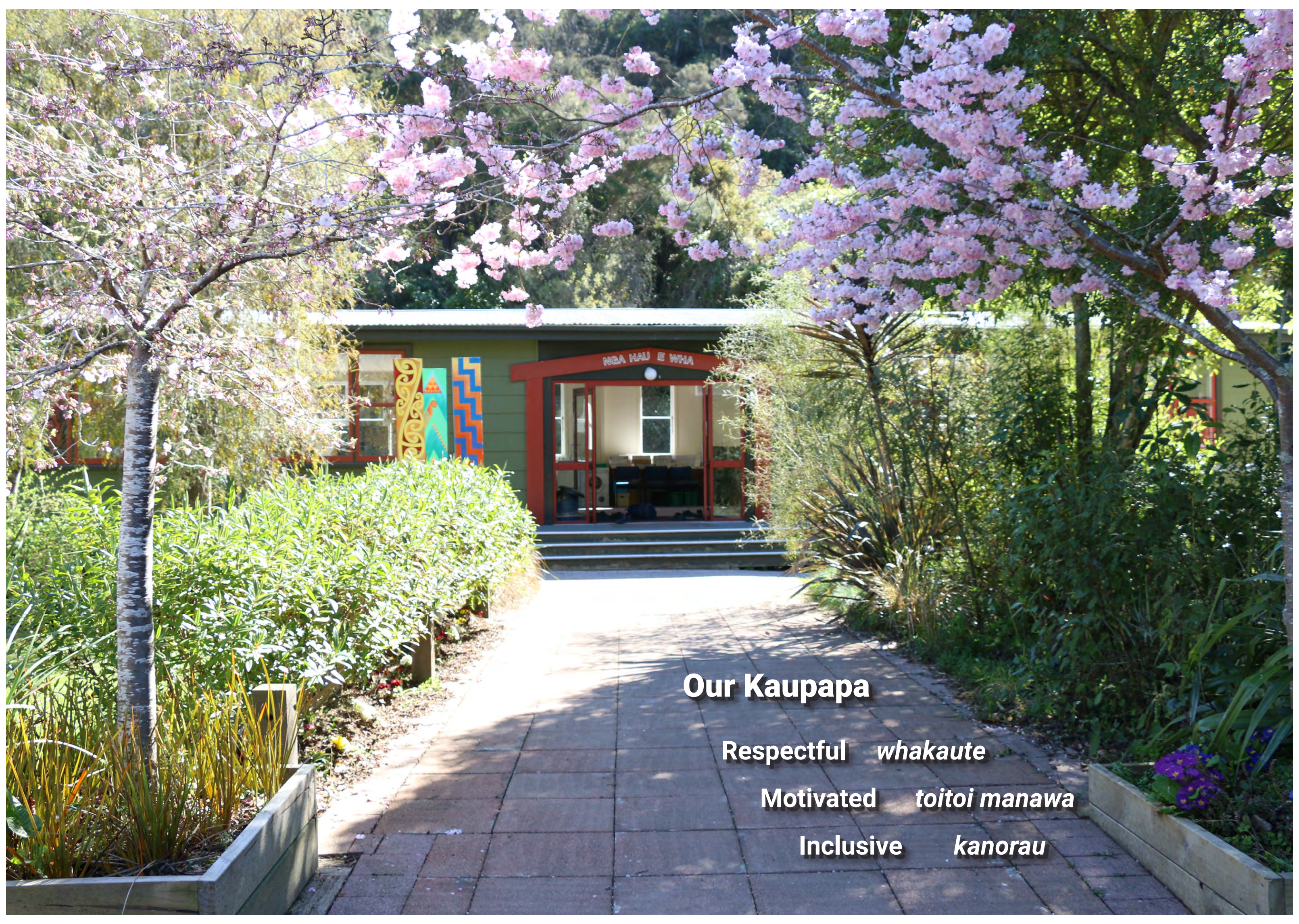
If there are more applicants in the second, third, fourth, fifth or sixth priority groups than there are places available, Selection within the priority group will be by ballot conducted in accordance with instructions by the Secretary. Under Section 11G (1) on the Education Act 1989. Parents will be informed of the date of any ballot by notice in a daily or community newspaper circulating in the area served by the school.

Applicants seeking second or third priority status may be required to give proof of a sibling relationship.



Kathryn Palmer, Ministry of Education 23/04/2020





Our Kaupapa

- Respectful** *whakaute*
- Motivated** *toitoi manawa*
- Inclusive** *kanorau*

LOGAN PARK HIGH SCHOOL



www.lphs.school.nz
office@lphs.school.nz
03 477 3586

auahatanga · hiriŋga · kanorau